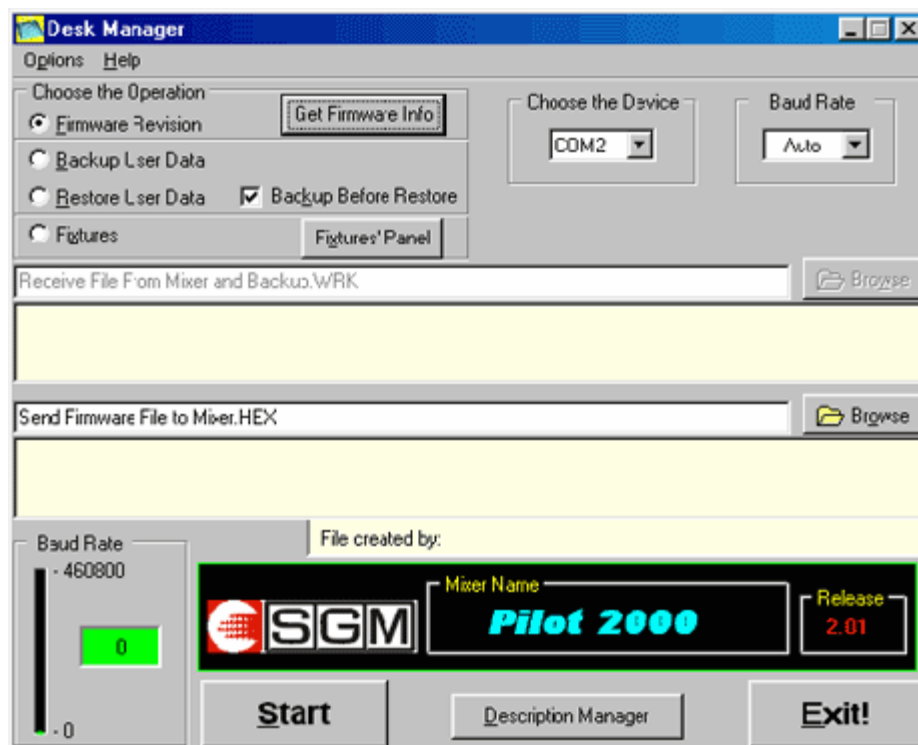


## **DESK MANAGER**



### **DESCRIPTION OF COMMANDS**

- **Get firmware info:** When the console is connected to the PC it displays the name of the console connected and the Firmware version.
- **Choose the device:** Allows the selection of the serial port on the PC to be used for the connection to the console.
- **Baud Rate:** Allows to select the transmission rate: if on Auto (default pos.), the highest is selected.
- **Firmware revision:** Allows the Firmware upgrade, choose Browse option to select the (.Hex) file to be sent to the console.
- **Backup User Data:** Allows a memory backup: choose Browse option to store the (.wrk) file and its name. When the backup procedure is completed, it is possible to write an additional comment to the file.
- **Restore User Data:** Allows to upload a previously stored backup file to the console: choose the file to be uploaded using the browse option.
- **Backup Before Restore:** If selected, performs a backup before starting with the restore procedure
- **Fixtures Panel:** Recalls the Panel window which will show the list of fixtures stored, the list can be modified by deleting, adding or saving fixtures.
- **Baud Rate:** Displays the transmission rate
- **Description Manager:** Recalls the Description Manager where it's possible to see the comments regarding each fixture.
- **Start:** starts the selected operation
- **Exit:** closes the Deskmanager program

### **ICONS USED:**



**Associated with a file with .HEX suffix:** indicates a Firmware file



**Associated with a file with .FXT suffix:** indicates a Fixture file

### **PROGRAMS SAVING:**

**If You want to save the data on the lighting desk, please proceed as follows:**

- 1. Start the DESKMANAGER**
- 2. Select the option Backup User Data**
- 3. At this point the option "Receive file from mixer and backup.WRK" will be enabled, use the key BROWSE to select the destination folder and the file name.**
- 4. Press the key START**

### **PROGRAMS LOADING:**

**If You want to restore the saved data, please proceed as follows:**

- 1. Start DESKMANAGER**
- 2. Select the option Restore User Data**
- 3. At this point the option "Send Firmware file to Mixer.HEX" will be enabled, use the key BROWSE to select the file you want to load on the mixer.**
- 4. Press the key START.**

### **FIXTURES MANAGEMENT**

**By pressing the key FIXTURE PANEL, you can enter a window allowing the fixtures management (projectors configurations) on the lighting desk.**

**The key FIXTURE PANEL allows to:**

- Add new FIXTURES (key ADD)**
- Save a new FIXTURE on the PC (key SAVE)**
- Delete a FIXTURE on the lighting desk (key DELETE)**
- By clicking on the key HIDE you can close the window FIXTURE PANEL**
- By clicking on the key REFRESH you can perform a new check to update the list of the fixtures loaded on the lighting desk.**

## **DESK MANAGER**

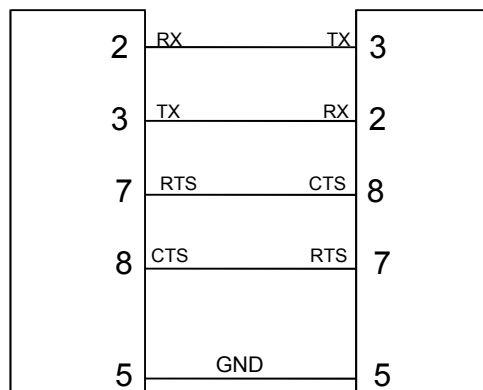
- 1. Start the DESKMANAGER**
- 2. Select the option Fixture Panel**
- 3. At this point a window will appear enabling you to see the fixtures loaded on the lighting desk and to add, to save or to delete the fixtures.**
- 4. By clicking on the chosen key it will be possible to automatically start the required option.**

### **TROUBLESHOOTING:**

In the case of error message: "MIXER NOT RESPONDING", please check the following:

1. The Studio/Pilot must be switched ON
2. The SETUP menu, must be disabled. If not, the communication between the desk and the PC is not allowed.
3. Be sure that on your pc are not installed CELLULAR PHONE softwares (NOKIA DATA SUITE or others). Infact, they usually keep the COM-PORT busy even if is not used.
4. The dip-switches on the rear panel must be all in OFF position.
5. The RS-232 cable used is a FEMALE 9 PIN to FEMALE 9 PIN: pin 2 and pin 3 as well as pin 7 and pin 8 are crossed while all the other wiring connections are pin to pin.

### ***Connection of the RS -232 CABLE for Studio and Pilot lighting consoles:***



If the cable is good, then there could be some other problems like:

### **SELECTION OF THE COM-PORT:**

The DESK MANAGER software, automatically recognize the number of PORT-COM equipped on the PC. Be sure that the port selected is the one really linked to the desk.

### **SELECTION OF THE BAUD RATE:**

DESK MANAGER usually send/receive the informations at the highest rate. In case of communication problem, a BAUD RATE of 9600 is recommended.